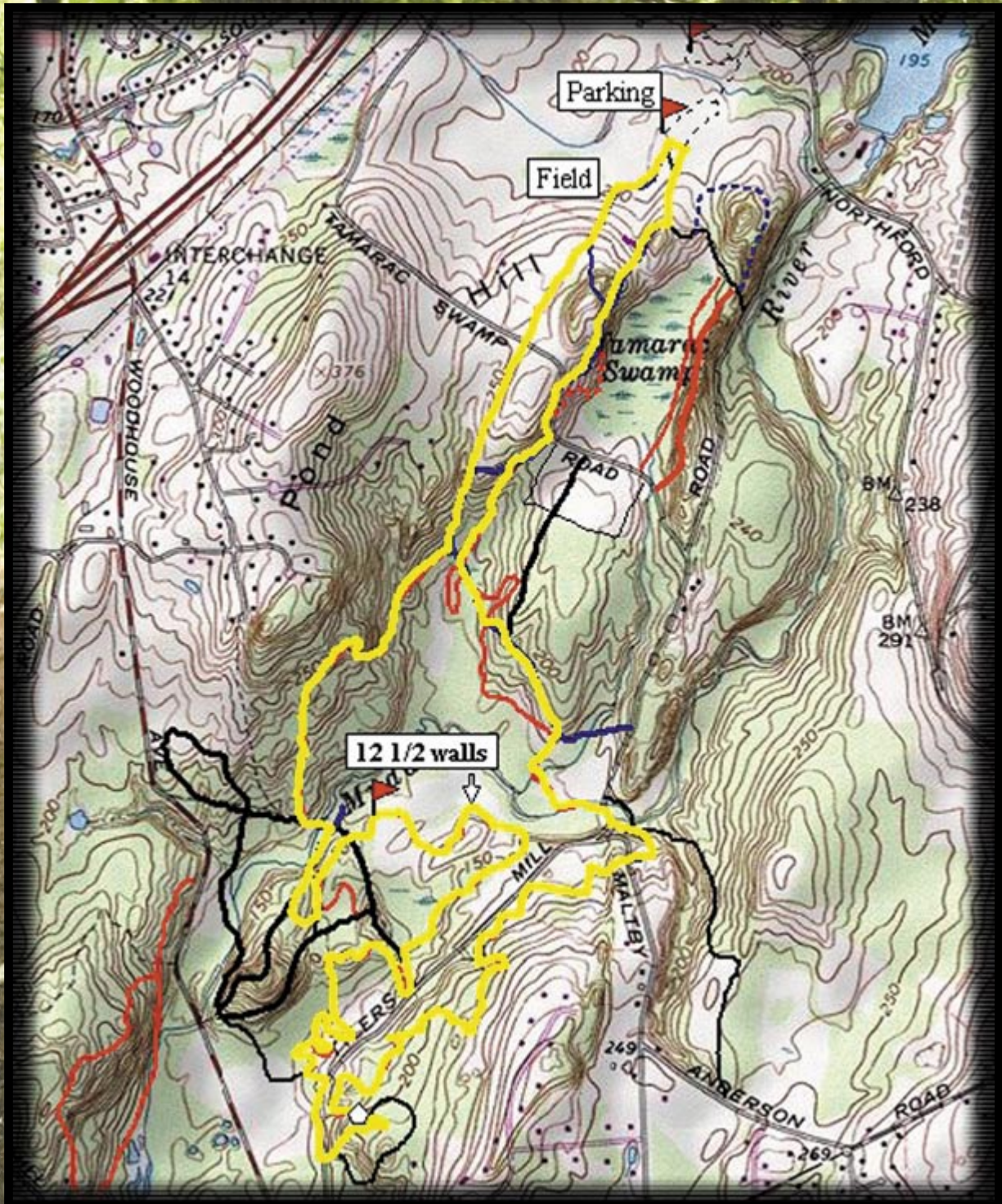


Wallingford

Mountain Bike Association

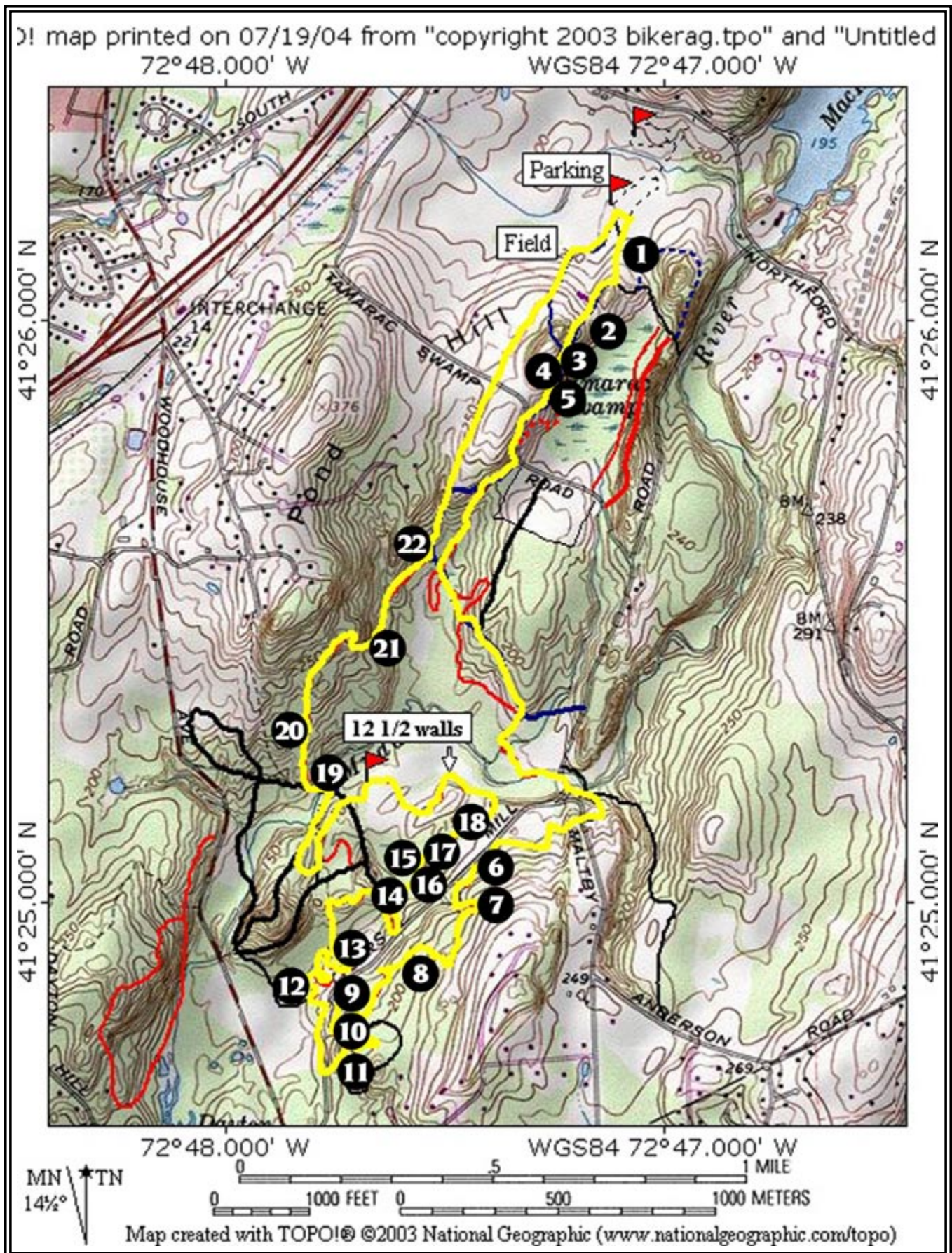
INTERIM REPORT 7-28-04



Trail work as of 07/28/2004.

Date	Number of people	Type of work	Total hours
06/05/2004	3	trail rerouting	10.5 Hours
06/10/2004	4	construct footbridge, waterbar, fences	10.0 Hours
06/11/2004	1	trail trimming	2.0 Hours
06/11/2004	1	construct fences to close illegal trails	3.0 Hours
06/14/2004	1	trail trimming	1.5 Hours
06/17/2004	1	repair ATV damage to fences	2.0 Hours
06/20/2004	1	trail trimming brush clearing from new bridge area	2.5 Hours
06/21/2004	1	grading area around new bridge stonework	1.5 Hours
06/23/2004	1	Scouting/checking new fences/minor stonework repair	1.0 Hours
06/26/2004	2	construct drainage ditch trim bushes	7.0 Hours
06/26/2004	3	remove log across trail close trail braid	6.0 Hours
07/05/2004	2	trail trimming	4.0 Hours
07/05/2004	2	Begin re-route for 12 1/2 walls area to avoid wet area	4.0 Hours
07/07/2004	2	Continue 12 1/2 wall re-route construct new bridge over season stream, dismantle old bridge	10.0 Hours
07/08/2004	4	Construct new bridge over mud hole	20.0 Hours
07/10/2004	1	Trim brush, pick up litter on trail near Woodhouse soccer field	1.0 Hours
07/11/2004	1	Trim brush, pick up litter on trail near Vietnam Vet Park	1.0 Hours
07/15/2004	2	scouting future trail work areas, checking ATV fences, meeting to discuss coordination of progress report to town	1.5 Hours
07/17/2004	1	Clear downed tree blocking trail, cut brush, raking near farmers field	3.0 Hours
07/20/2004	1	Trail trimming	3.0 Hours
07/21/2004	1	trail trimming, raking and clearing brush	1.0 Hours
07/22/2004	3	Add waterbars to steep climbs, reroute top section, repair ATV fence	9.0 Hours
07/26/2004	2	Take pictures and inspect trails for interim report to town	4.0 Hours

Annotated map of Tyler Mill.



Wallingford

Mountain Bike Association

INTERIM REPORT 7-28-04

Mission Statement:

The Wallingford Mountain Bike Association works to maintain a sustainable and diverse trail system in the Tyler Mill area that enhances the natural aesthetics and are environmentally sensitive for all users groups to enjoy.

Trail Progress

Trail maintenance, under the authorization of Henry McCulley, has begun in earnest. The attached trail map is numbered. Each number corresponds with a paragraph below explaining the work completed and/or proposed work.

1. Two drainage ditches were dug in an area is notoriously muddy during the spring. The uphill trail to the south catches and retains the naturally flowing water going down to the vernal pool located on the northern borders of the soccer field. These ditches will increase the available amount of water for the vernal pool, ensuring that it does not dry up prematurely, which would kill wildlife dependant on standing water. Mud should be minimized for hikers and bikers using the trail, which can often get inadvertently widened by users trying to avoid the mud. (see figure #1a)

2. This water bar slows the rush of downhill water and diverts from the trail, allowing the trail to drain quicker and be more resistant to rutting out. Water bars can reduce the particulate matter that enters the watershed during heavy rains, which benefit aquatic life. (see figure #2a)

3. This hill is very steep and is of special concern due to some serious erosion. This group would like to see the trail rerouted completely as a future project if approved by Henry McCully. A reroute would lessen the grade, create switchbacks and allow this weak link in the trail system to sustain user traffic. As an interim measure, three water bars were added, and the trail was moved over a couple of feet at the top, as the previous location was impassable and was quickly eroding. (see figure #s 3a, & 3b)



figure #1a

4. The trail here is rutted. Water bars need to be added to divert water from the trail. This is planned as a future trail maintenance project.

5. This trail was closed. (see figure #s 5a & 5b)

6. This is an example of “armoring” a trail. Rocks were gathered and put in the middle of a trail through a muddy area. Prior to the “armoring of the trail, this area was extremely muddy and was leading to trail widening. Armoring can be done with rocks (the first section) or with logs (the second section). Also, the route of this trail was rerouted to the south avoid a swampy area. The old section is very hard to see now (things grow very quickly in Tyler Mill), but if you can make out the trail, you see that it was close to a swampy area. (see figure #6a & 6b)

7. More water bars need to be added, with a slight trail reroute

8. Another example of trail armoring. (see figure #8a)

9. This area was originally rerouted in 2001 by the New England Mountain Bike Association during a trail work . However, a group of individuals who resisted trail improvements did not support the reroute. We work hard to persuade other users to support maintenance towards a sustainable trail system at Tyler Mill. This original trail is far too steep and any run-off from the trail goes immediately into the seasonal stream. The 2001 reroute will be revived as time allows. (see figure #s 9a & 9b)



figure #6a

10. This was a new bridge built by Public Works at our bequest. We are very happy with this bridge since it is functional, strong and aesthetically pleasing. (see figure #s9a & 9b)

11. This area is know as “the double drops”. Those wishing to descend down the rock wall have one path and those looking to take a more conservative line are allowed to divert to the right. The options are clearly marked with signs along the trial before the section. What happens in this area is typical of technical sections. Riders choosing to avoid the rock wall tend to create a new trail around the obstacle. This widening of a trail is known as “trail braiding.” Rock paths have been built and branches has been laid down to discourage this activity.

12. This area is known as “the maze” It is a favorite among mountain bikers because it is a flowing, twisty, non-technical trail . This area is invested with autumn olive, an invasive plant according to Joanne Minion. Constant trimming of it low-lying branches is mandatory.

13. The second half to the maze begins where the trail reaches the road. This area is deliberately not trimmed during the spring to as to discourage its use as it is too wet to ride in there. (see *figure #13a*)

14. This is the entrance to a trail known as “12½ walls” The rock walls on either side were built to discourage ATV’s from widening on the trail and destroying its scenic beauty and flow.

15. An original bridge was constructed here that was too difficult for many trail users to negotiate. Tires and footprints went into the streambed and it was decided after review with Henry McCully, the trail should be moved to higher ground, The old bridge be removed and a new one built in its place. This reroute was recently completed. It is possible to see the old route which also went up a steep hill which led to far too much erosion. The new route includes a bridge that is easier to negotiate and avoid the steep hill climb. (see *figure #s 15a, 15b, 15c*)

16. A log bridge was built to go over mud section that interfered with waterflow.

17. Trail was rerouted. The previous uphill route was too steep and off-camber, which led to erosion. The slope of the reroute is less steep and is much more environmentally stable.

18. A log bridge was built over a muddy section. (see *figure #18a*)

19. New bridge built by Henry McCully and his crew. This bridge is absolutely spectacular and was sorely needed. It seems as every user group has benefited from this addition. The race will cross the river here, instead of the river crossing downstream. The course will now completely avoid a particularly sensitive area of vernal pools (Rome’s pools) .



figure #13a



figure #18a

20. This is an experimental ATV fence built from all natural materials. Our strategy behind deterring ATV use is based on some of our own observations.:

- (1)** ATV users don't like getting off their machine's to move objects to access trails.
- (2)** They will create an alternative line to access a trail without getting off their ATV based on observed skid markings.
- (3)** Tyler Mill is an attractive area only for local residents as it is a very small parcel for ATV riding. Our strategy was to make it more difficult to access trails, although not impossible (if an obstacle was impossible to remove, ATV riders would do more damage creating a new trail in which access the trail system).



figure #20a

The ATV fences we built can be taken down by hand, but it takes some work. Running over the fences with an ATV does not work, so we hope the labor intensive destruction of the ATV fences will discourage those illegal trail users. The WMBA members have been monitoring the fences over the summer and immediately repaired damage when it is observed. Some early summer damage by ATVs was done to the fences, but finally the efforts have paid off. In the last 5 weeks, with only one exception, the trails have been remarkably ATV-free.

21. This area will be rerouted as time allows. The trail needs to be moved to higher, dryer ground. Also a bridge will be built to traverse the seasonal stream.

22. Another ATV fence. This one and Number 20 effectively cut off the entire west side of the area to ATV's. (see *figure #22a*)

23. We proposed that a return trail that currently runs through the fields leased to a farmer be moved over to the east into the woods. The area is dry and rocky, thus will be able to sustain a lot of traffic with very little impact.



figure #22a

Looking Forward:

Trash:

Tyler Mill area is a beautiful tract of open space for the town of Wallingford, but has suffered from abuse as an unofficial dumping ground for over fifty years. Vegetation grows in there are an amazing fast pace and covers up many of the layers of trash. A lot of work needs to go into removing litter such as numerous shotgun casings, construction debris, auto parts, and liquor bottles. It is doubtful that the town has the budget to pay for such a clean up. Rather, we suggest that the town consider to place a dumpsters in a designated location so that user groups on their own time can go in and haul trash out. The receptacles could be placed on Tyler Mill Road so that only those with a key to the fence can use the dumpster. Also, we recommend that user groups be granted access to a key to the lock at the beginning of Tyler Mill Road. This would make the clean up and trail maintenance easier.

Trail Marking:

The trail system is not blazed, people often get lost. This is a problem we wish to have the authority to address. There is much work to be done in Tyler Mill. We are truly grateful for the support we have received from the Town in our quest to make the area more enjoyable for every legal user. The race promoter, Tony Cipolla, has been thoroughly supportive of our work and has been a pleasure to deal with. We are confident that the race will be a success.

Respectfully submitted,

Anthony E. Parent, President

Kerry Combs, Vice-President



figure #1a



figure #2a



figure #3a



figure #3b



figure #5a



figure #5b



figure #6a

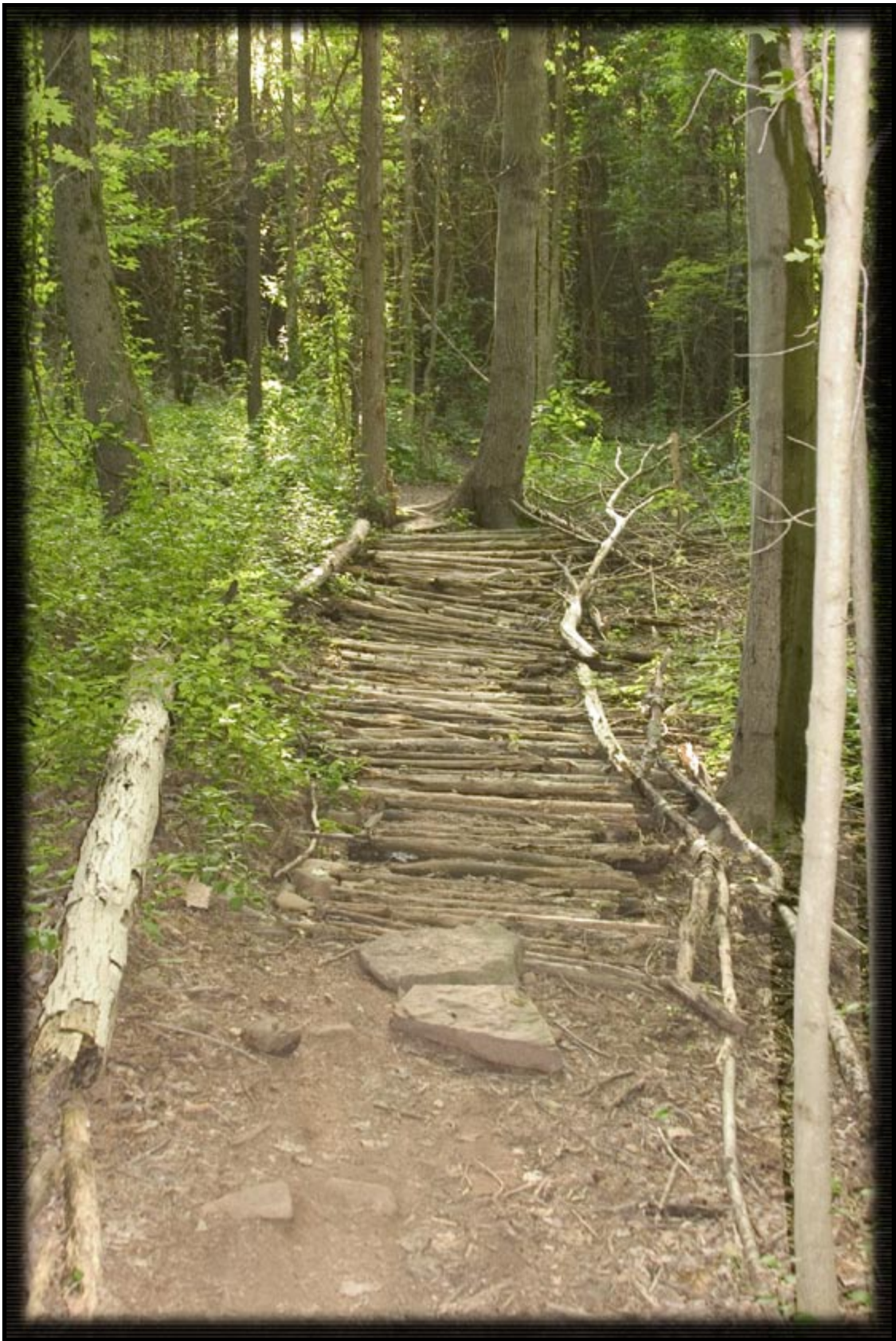


figure #6b



figure #8a



figure #9a



figure #9b



figure #13a

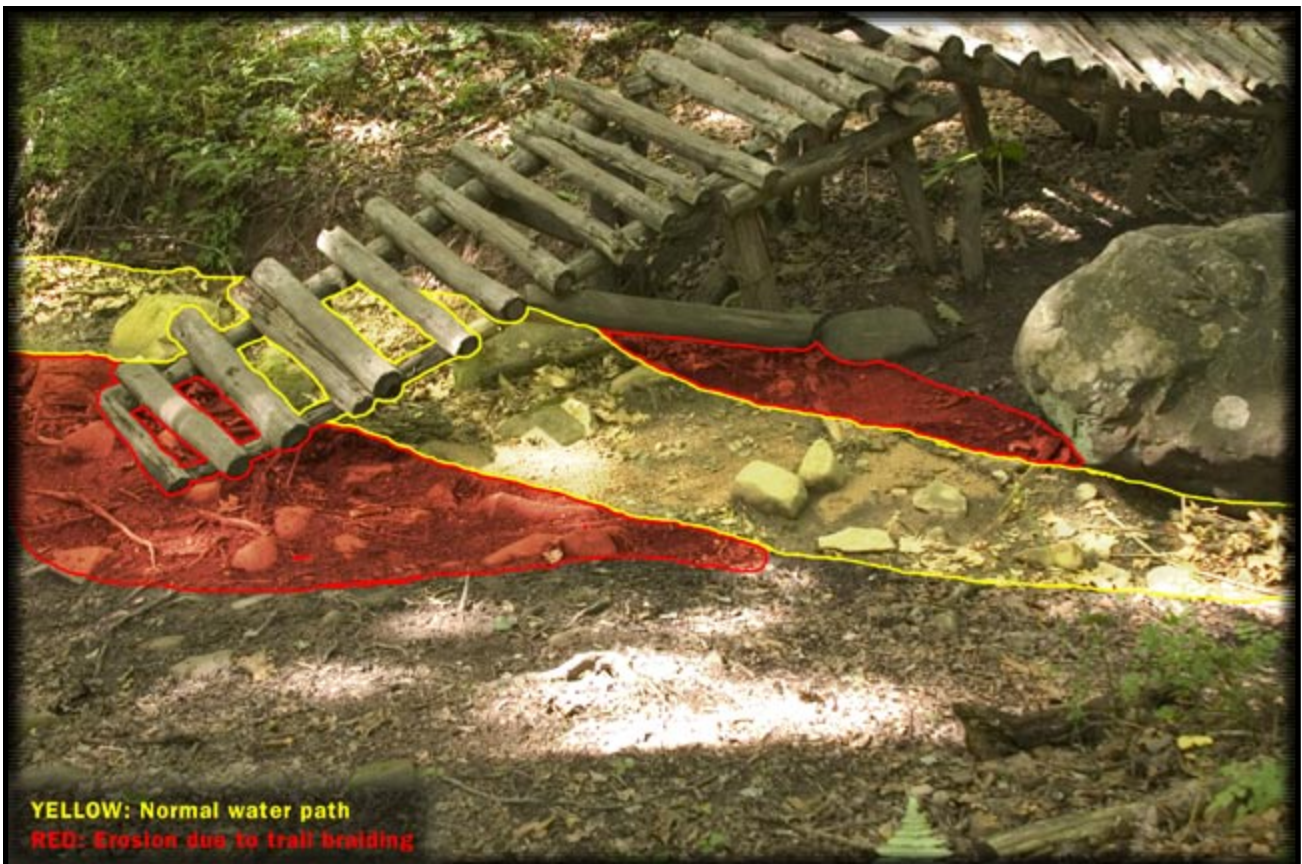


figure #15a



figure #15b

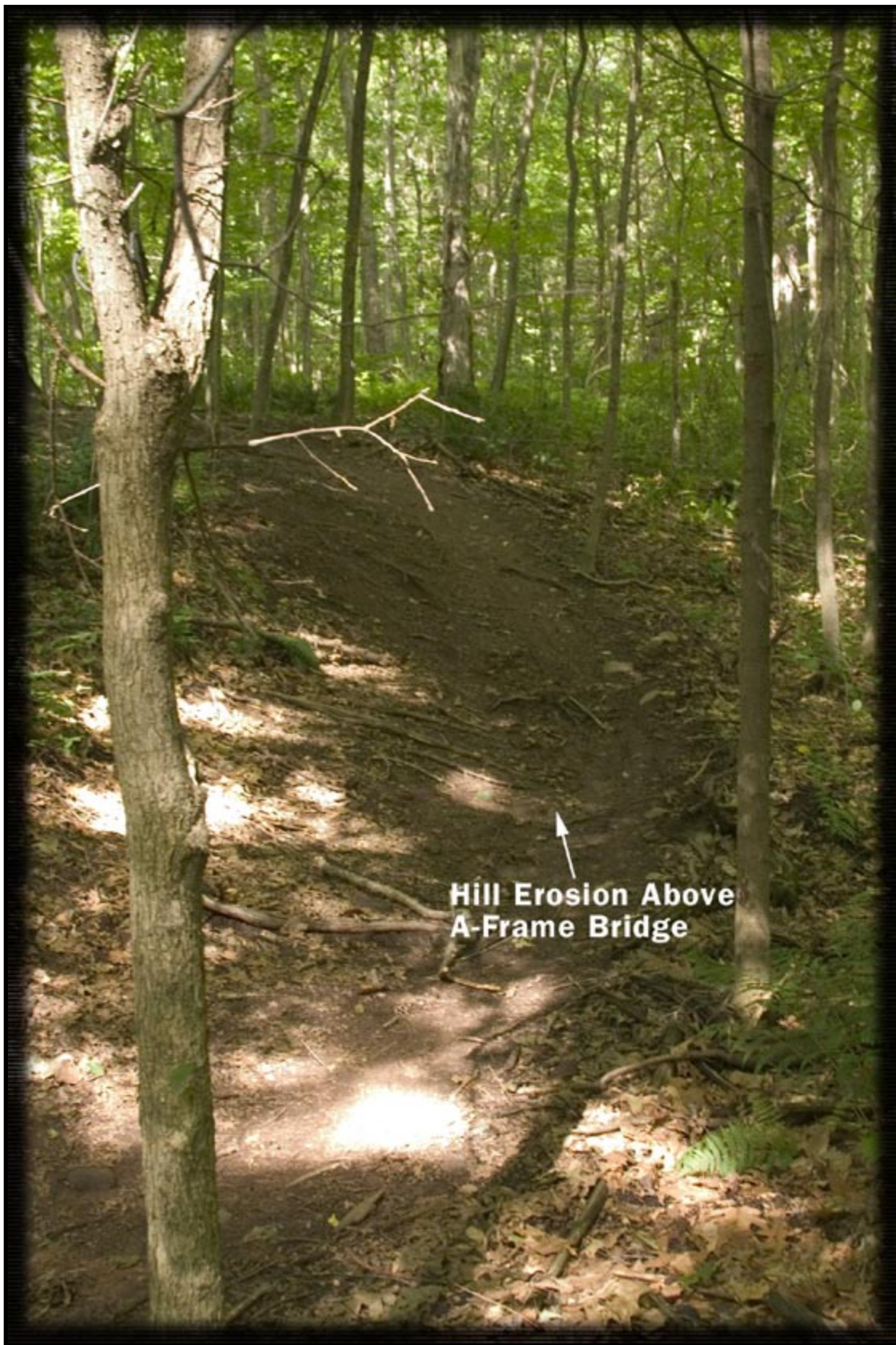


figure #15c



figure #18a



figure #22a